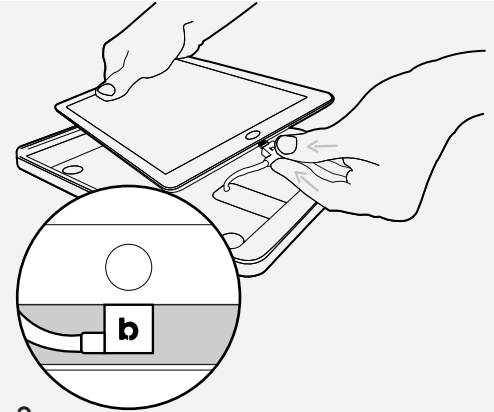


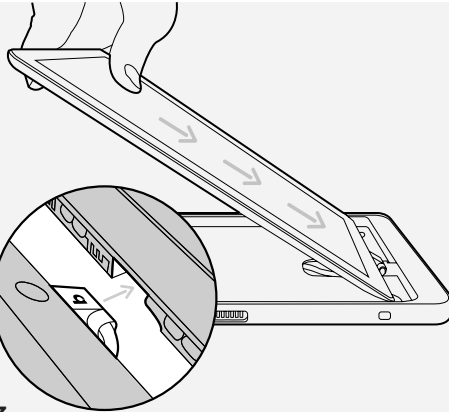
1.

Place the Case on a flat surface and turn your iPad off. If your iPad screen is cracked or damaged, do not install into the Case.



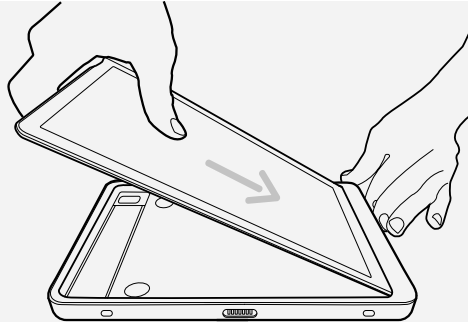
2.

Plug the Lightning connector into your iPad, making sure it is in the orientation shown above.



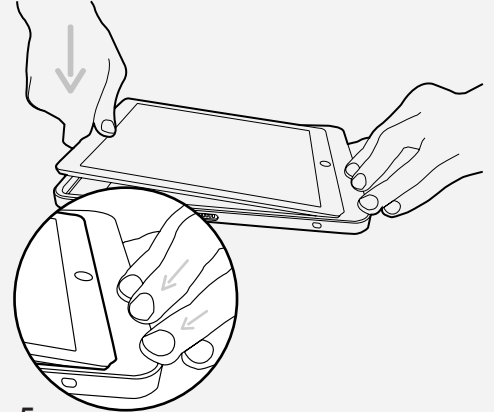
3.

Press your iPad down into the case as shown above, making sure the cable is tucked under the lip.



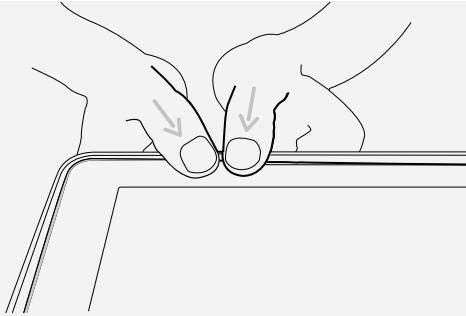
4.

Hold the Case firmly at the cable end and press your iPad into the case, making sure your iPad is tucked under the lip along that edge.



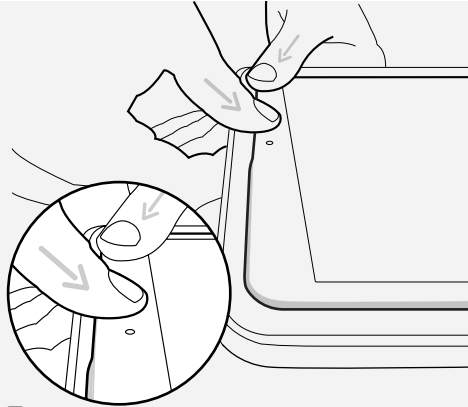
5.

Hold the Case steady and press the opposite end of your iPad down into the Case.



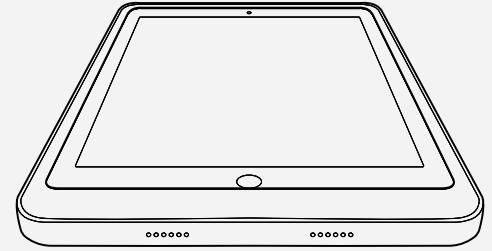
6.

Without pressing directly on the screen, press down along the sides of your iPad to make sure it is under the lip of the Case.



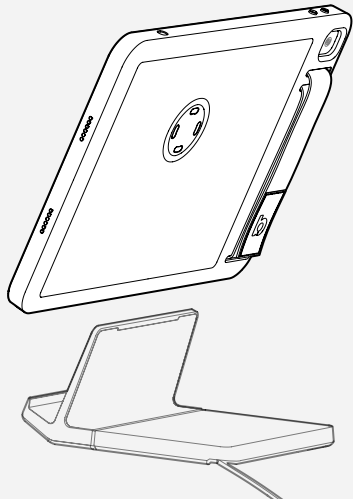
7.

Continue to press down along all sides of your iPad to make sure it is under the lip of the Case.



8.

Check to make sure the Case lip isn't pinched under your iPad. This ensures the highest level of drop-proofing.



Bouncepad Mobi Case

Bouncepad is a Spotspot Ltd brand

© and © 2018 Bouncepad Spotspot Ltd

All rights reserved

UK 5275260

London, United Kingdom

EN-60950-1 Approved

IEC-60950-1 Approved

UK Patent Application No. 1710759.0

[bouncepad.com](http://bouncepad.com)